



SEQUEL

\$103,668 | Build Time: 5-7 Weeks

 1 BEDROOM	 2 BATHROOM	 1060 SQAURE FEET
--	--	--

HOME AMENITIES

HERITAGE SERIES

EXTERIOR

- Container Walls Primed and Painted w/ Wood Accents
- Up to 1/3 of exterior walls covered w/ Red Cedar Wood
- Insulated Windows
- Exterior Courtesy Entry Door Light

INTERIOR

- Vinyl Flooring
- Tiled Shower with Curtain
- Textures and Painted Sheetrock Walls
- LED light Fixtures
- Delta Faucets (Chrome)
- Standard Wall Switches and Plugs
- Laminated Counter Tops
- Electric White Line Appliances (where applicable)
- Regular Press-board Laminated Cabinets
- Mini-Split A/C & Heating System
- Electric Tankless Water Heater

CONTACT US TODAY!

 (210) 557-1380

 aundrick@kountrycontainers.com

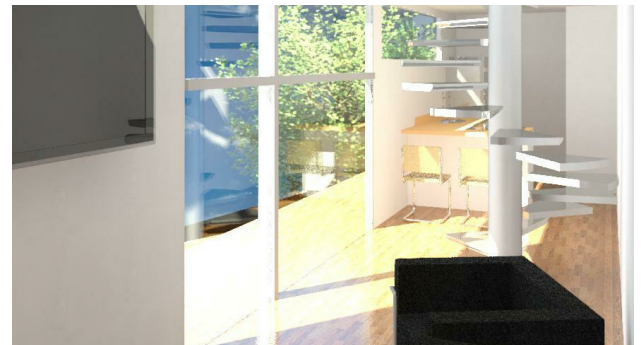
ANTEBELLUM SERIES

EXTERIOR

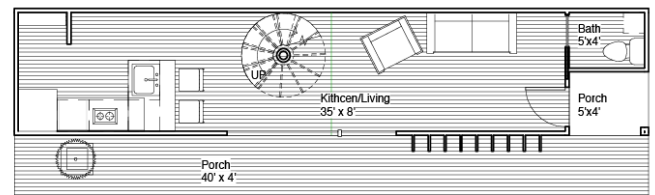
- 100% of Exterior Walls Finished w/ Red Cedar Wood or Equivalent
- Low E Insulated Tinted Windows
- Red Cedar Wood Deck as Specified on Plans
- Wood / Aluminum Accents on Exterior Walls
- Exterior Wall LED Lighting

INTERIOR

- Wood Floors (Color to be selected)
- Walls at Owner's Selection (un-textured, textured, Painted any Color)
- Fiber Glass Shower with Glass Enclosure
- MOEN or Delta Faucets any Finish
- IKEA Section Bathroom and Kitchen Wood Cabinets
- Mini-Split A/C Heating Full System(s) w/ RC
- LED Lighting Throughout the building w/ Color Accent lighting with Remote
- White Elgato Smart Light Switches
- Up to 50% of Interior Wall Surface Covered in Red Cedar Wood or Equal
- Electric Stainless Steel Kitchen Appliances (Range-Oven / Refrigerator & Sink)
- Granite Counter Tops (Color selected by Owner)
- Electric Tankless Water Heater
- Washer/Dryer Unit (Allowance)
- Furniture Optional



LEVEL 1



LEVEL 2

